

Turner Contemporary

A visual journey



Welcome to Turner Contemporary.

We are an art gallery in Margate inspired by JMW
Turner's experimental and radical approach to
making art.

We believe everyone is creative and has a right to
enjoy art.



The gallery is near the Harbour Arm. You will see lots of boats in the water opposite.

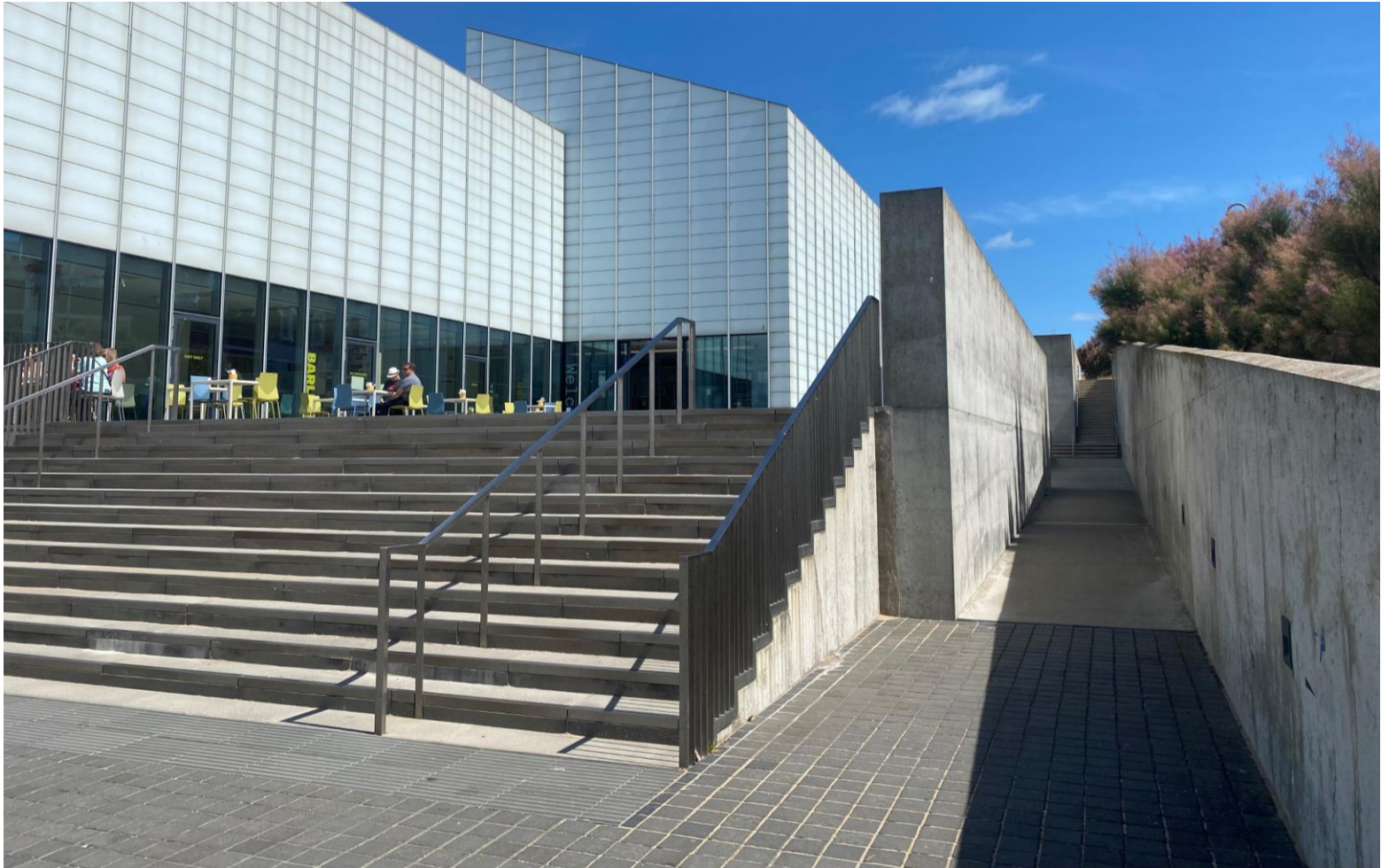


There are seven accessible parking bays available for visitors with a Blue Badge.

Pay and Display parking can be found just opposite the gallery on the Harbour Arm and just beyond the RNLI on the Rendezvous next to the gallery.



1. Harbour Arm pay and display car park
2. Accessible parking bays
3. Turner Contemporary
4. Rendezvous pay and display car park



You can use the steps or accessible ramp to enter the gallery.



Here is the entrance.

The doors open automatically.



He works for
from window and
and underground
apartment above in
the midst of the
installations create
of colour and form
architecture and time

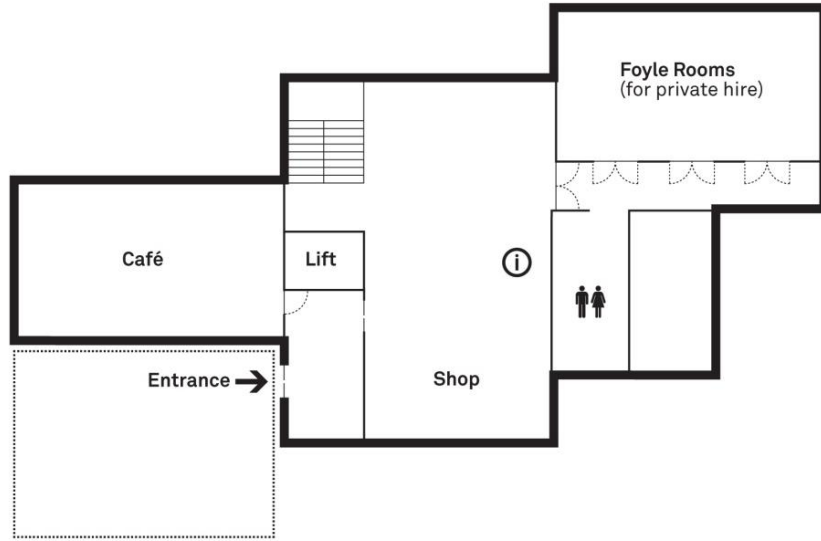
The landscape around
the Gallery Window,
the vast expanse of the
a look of interest glass
rises the space with colour
dark paper roll-ups and
gains de Venice, France.
Ideas connect with the
pacing weather, the quality
to "turner encourage in his
environment.

Run as the Long Museum
to read this summer in
programme of children's
with Museum's experiences
of world. View the window
noted in the evening.

Our gallery team is here to help.
They wear black clothes and an
orange lanyard.

Speak to them if you have any
questions or would like to know
more about the exhibitions or
activities happening.

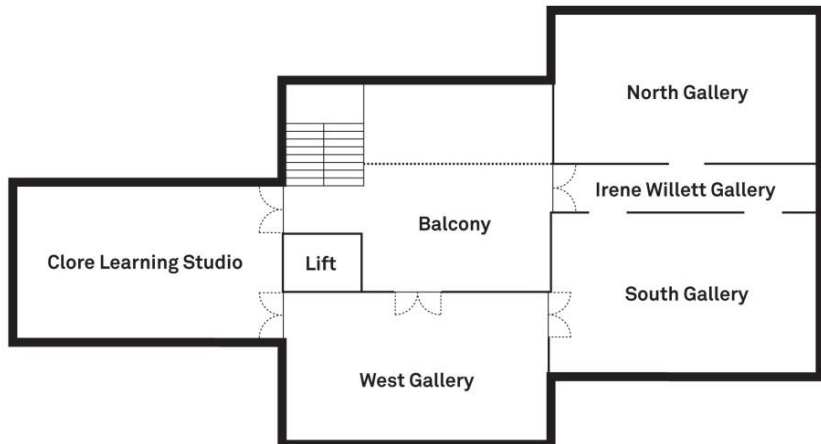
Ground floor



Here is a floor plan of the building.

The Sunley Gallery, shop, café, Foyle Rooms and toilets can be found on the ground floor.

First floor



The galleries, Balcony, and the Clare Learning Studio are on the first floor.

Our opening times are

Tuesday – Sunday 10:00 – 17:00

We are free to visit.

Ground Floor



This is our shop. If you would like to buy something, you can take it to the shop desk on the right. There is a hearing induction loop at the shop desk.

Ground Floor



This is our onsite café. If you would like something to eat or drink, speak to a member of staff at the desk. There is a hearing induction loop at the desk.

Sometimes it is loud and busy.

There is an accessible toilet in the café.

Ground Floor



This is the Sunley Gallery, the main entrance hall. Sometimes there are performances, workshops or artworks in this area. It can be bright and busy.

Today, you will find large, shiny sculptures by Lynda Benglis. You cannot touch the artwork, but you can ask a member of staff for a Gallery Toolkit or Sensory Bag if you would like to see what they feel like.



This is the Ground Floor Corridor. Sometimes artwork is shown here. The Foyle Rooms are to the left. Toilets and lockers are to the right. The hand dryers can be noisy.



We have single and multiple cubical toilets for all genders.

There are accessible toilets and a baby change area.

Lockers are available to use.

Ground Floor



These are the Foyle Rooms. We use them for events and meetings. If you need a quiet space, you can ask to use one of these rooms if they are available.



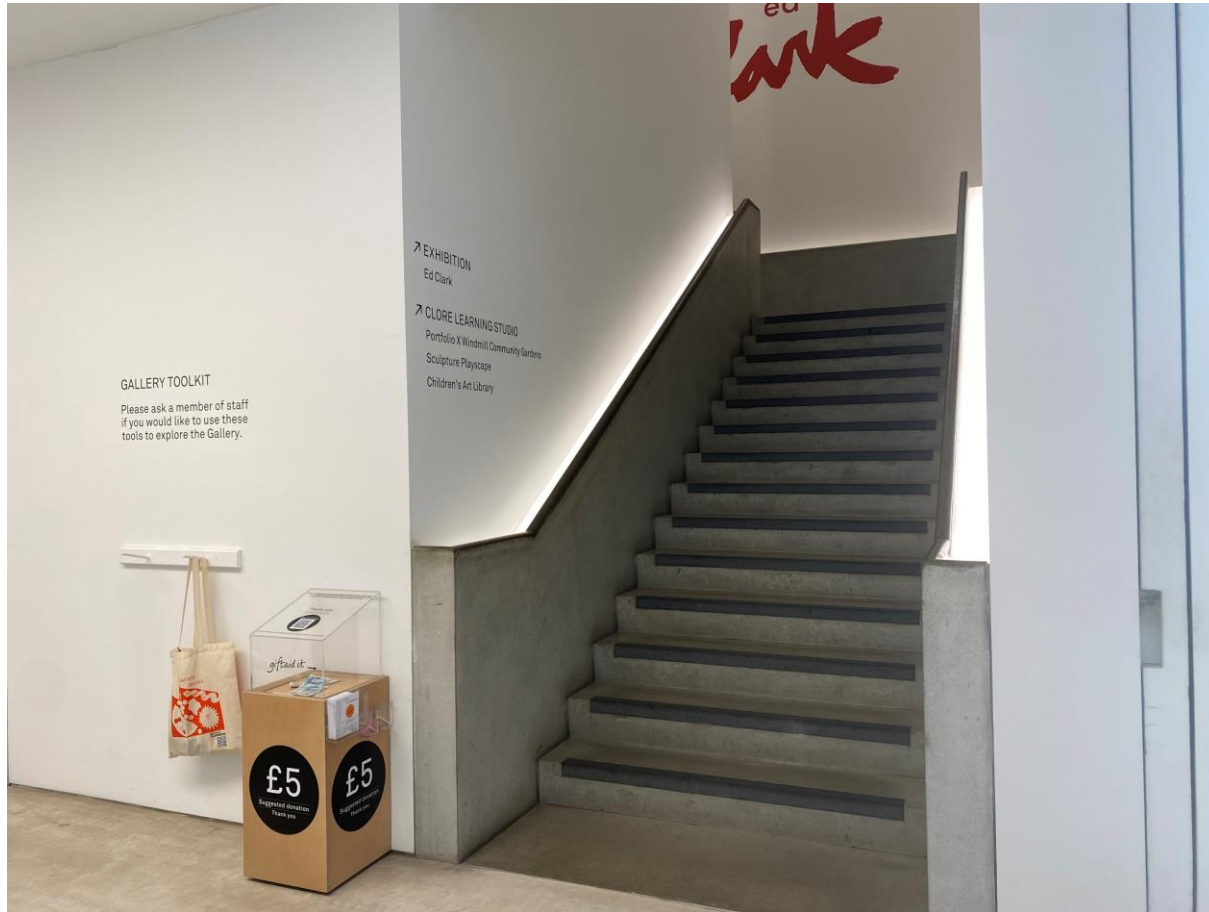
There is our Access Station. Feel free to borrow the items including large print text, magnifying glasses, ear defenders, wheelchairs and portable stools.



Feel free to borrow a Gallery Toolkit during your visit.

Each bag includes questions, games and activities to make your visit more enjoyable.

Ground Floor



The galleries are on the first floor.

You can get there by walking up the stairs or taking the lift.

There are 28 steps and handrails on both sides.



The lift is opposite the stairs.



The lift is very big with handrails and controls on each side.

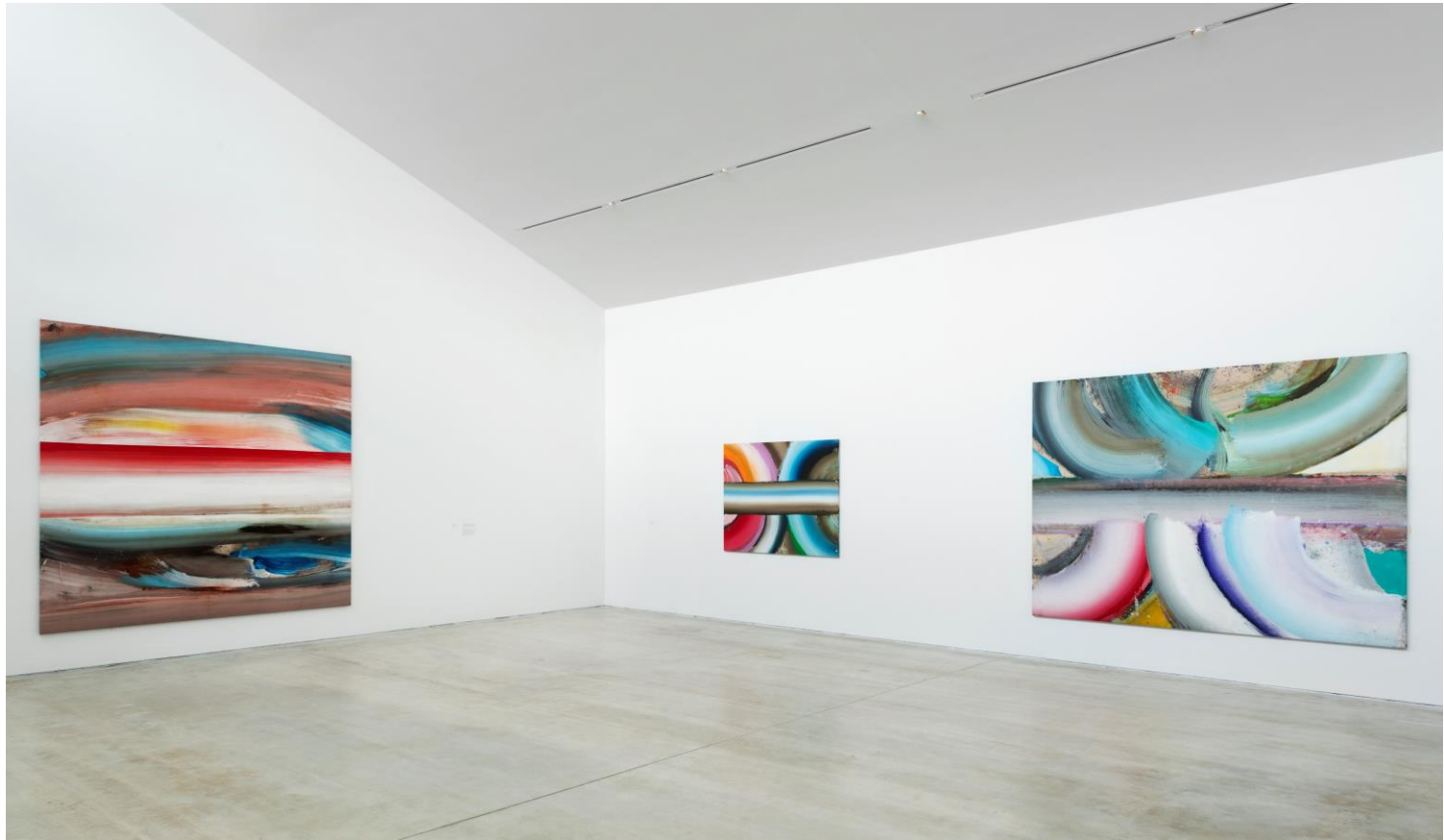
You enter and exit the lift through the same door.

There are sounds in the lift.

First Floor



This is the balcony. Here you will find information about the current exhibitions. Today, we are showing artwork by artist Ed Clark.



The main galleries are upstairs. The look, sound, and feel of these spaces change often. The gallery team are in each space if you have a question. Seating is throughout the galleries.



ge, and the
ellipse,' he said.
val into controlled,
reviewers, these
of being in nature:
ult in harmonies
sa when it mirrors
awrence Campbell

owing. Yet, for all
inspiration further
Jack Whitten in
completely new colour
rately sought out the
places [and] tried
luences'.
st followed, excursions
exico, Brazil, Egypt,
egular trips to Paris
Clark's practice.



There are Sensory Bags in every gallery. Inside each bag, you will find tactile objects that connect to the artwork.

Feel free to pick one up or ask a member of the team if you have any questions.



This is the Sculpture Playscape. You can chill out, take part in workshops or self-led activities and explore the Children's Art Library.

To access our interactive guide,
download the Bloomberg Connects app
via the QR code or by clicking [here](#)



Here you'll find more information about
the gallery and exclusive stories and
videos about our exhibitions and
programme.

Audio versions of the text are available
via the app.

Contact information

Turner Contemporary

Rendezvous

Margate

Kent CT9 1HG

01843 233000

access@turnercontemporary.org

Phone and email operated daily 10:00 – 17:00

More accessibility information:

<http://turnercontemporary.org/accessibility/>