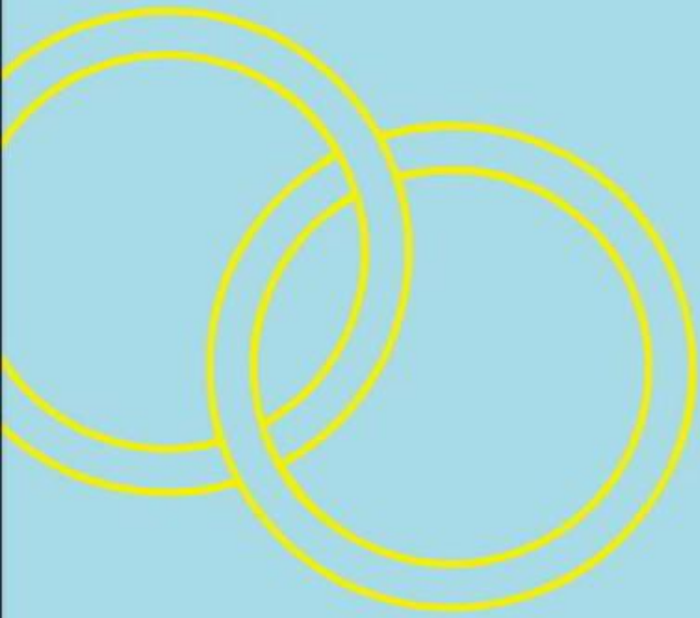


Turner
Contemporary



Turner Contemporary Venue Hire

hire@turnercontemporary.org

A landmark venue on the Kent coastline, Turner Contemporary is a truly inspirational and unique choice for a fashionable and elegant wedding.



The Clore Learning Studio on the 1st floor can be hired for your wedding and civil ceremony.

With a spectacular view over the Harbour and the sea you will enter the space and walk down an aisle towards the windows surrounded by your family and friends. A changing exhibition offers an immersive experience in the contemporary art world.

Capacity: 120 seated theatre style

The ceremony





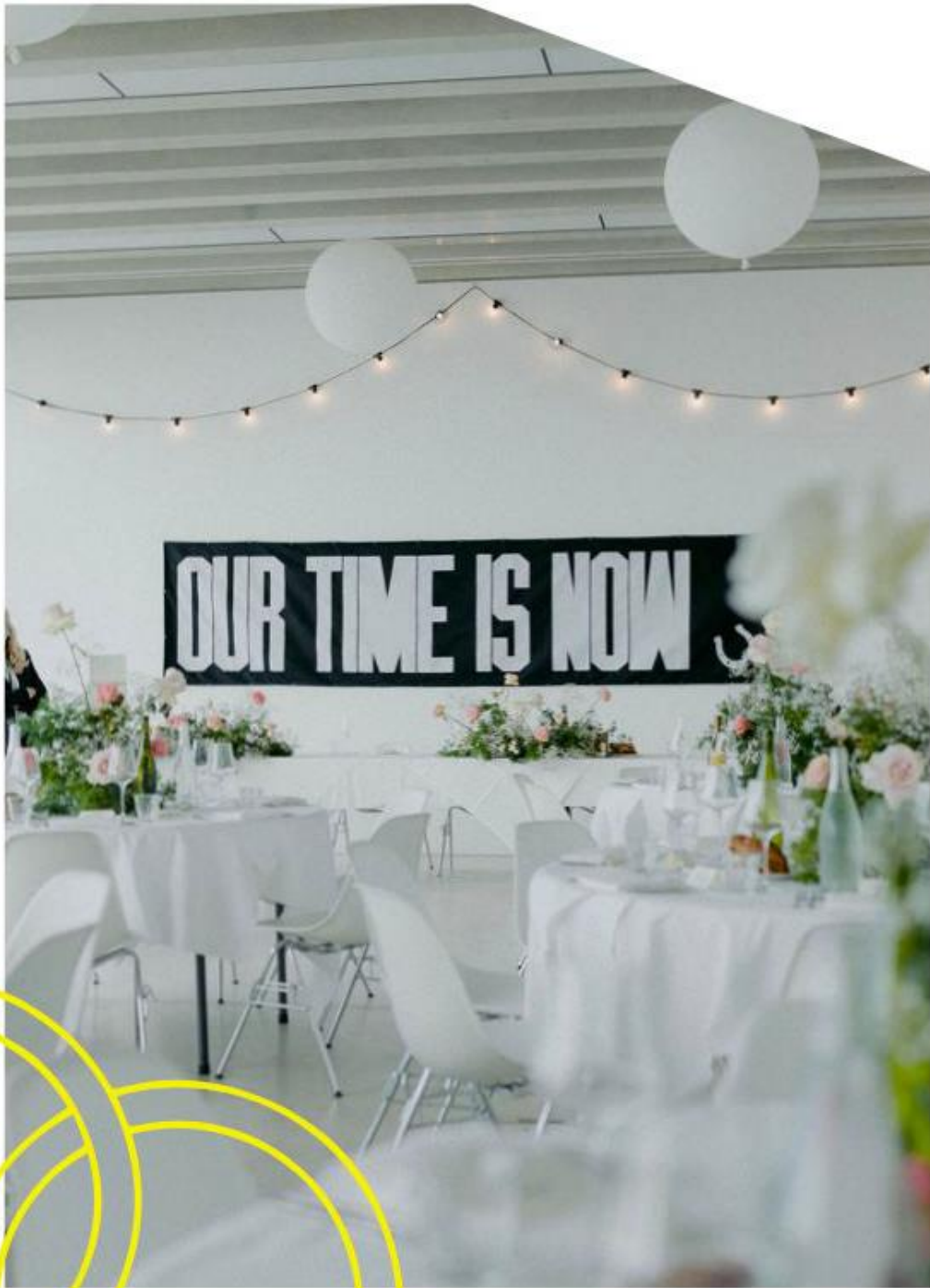
The reception

Coming downstairs to the outdoor terrace you will greet your guests and start the celebrations with a glass of fizz and some tasty canapes, while your photographer finds the most amazing backdrops to create your memories.

The Foyle Rooms on the ground floor of the gallery are the perfect blank canvas on which to unleash your creative flair against an ever-changing seascape that dominates the view with floor to ceiling windows. We furnish the space with round or long tables to suit your ideas and there is a wide outdoor balcony for your guests to enjoy the fresh air and admire the famous Margate sunset.

The wedding breakfast





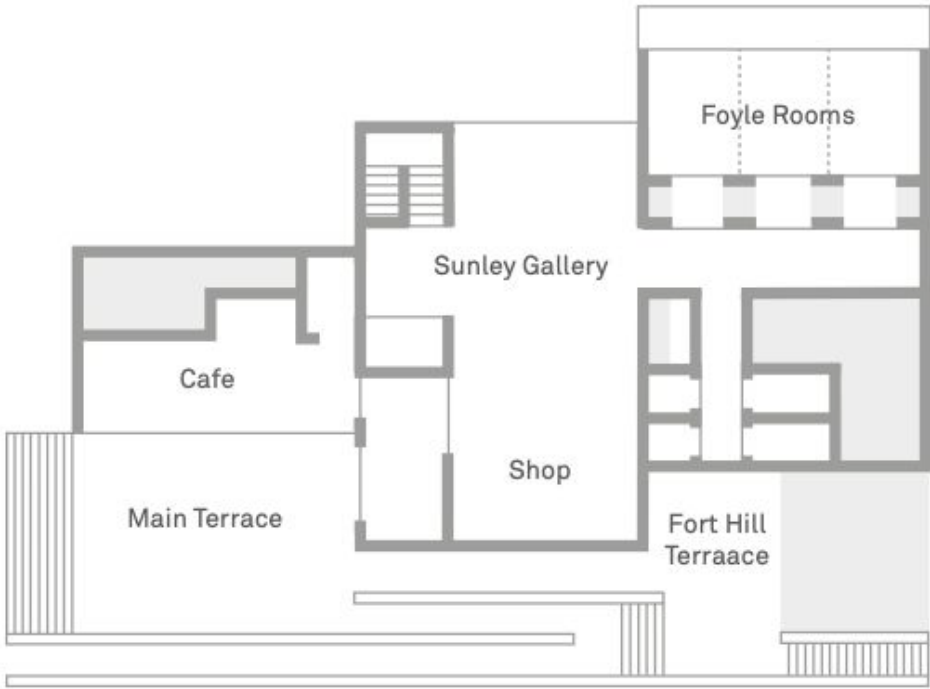
The evening

After the meal and speeches, once the gallery has closed, you have exclusive access to The Sunley Gallery on the ground floor for drinks and cake cutting while the Foyle Rooms are re-set for the evening. Dancing continues up to midnight as your perfect day comes to a close.

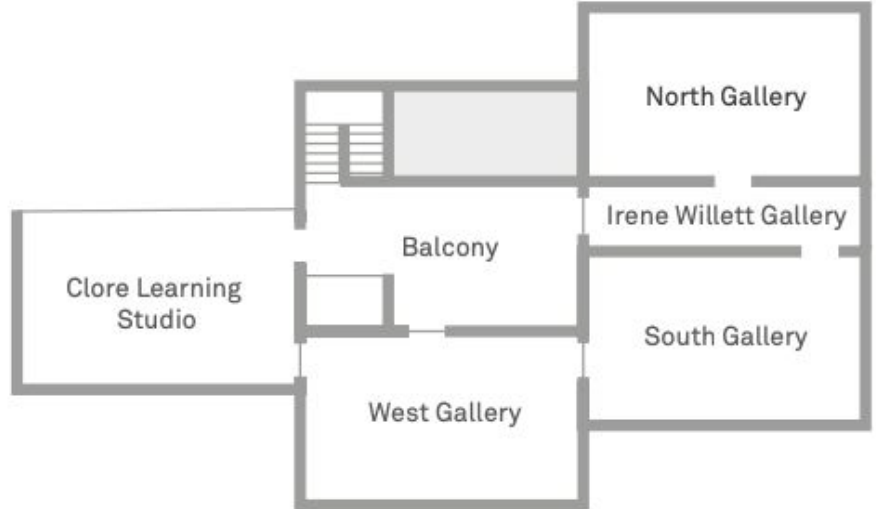
Capacity: 120 for seated meal and 150 for evening



Beach



Ground Floor



First Floor

Floorplan