

Turner Contemporary

A visual journey

Welcome to Turner Contemporary

We are a contemporary art gallery in Margate,
inspired by JMW Turner's experimental and
radical approach to making art

We believe everyone is creative and has a right to
engage with art



The gallery is near the Harbour Arm. You will see lots of boats in the water opposite.



You can use the steps or accessible ramp to enter the gallery.



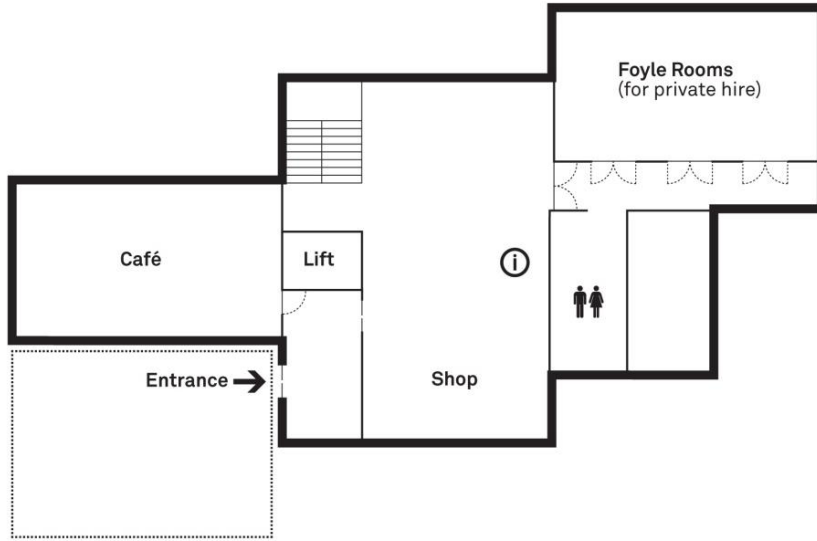
There are seven accessible parking bays available for visitors with a Blue Badge.

Pay and Display parking can be found just opposite the gallery on the Harbour Arm and just beyond the RNLI on the Rendezvous next to the gallery.



1. Harbour Arm pay and display car park
2. Accessible parking bays
3. Turner Contemporary
4. Turner Contemporary pay and display car park

Ground floor

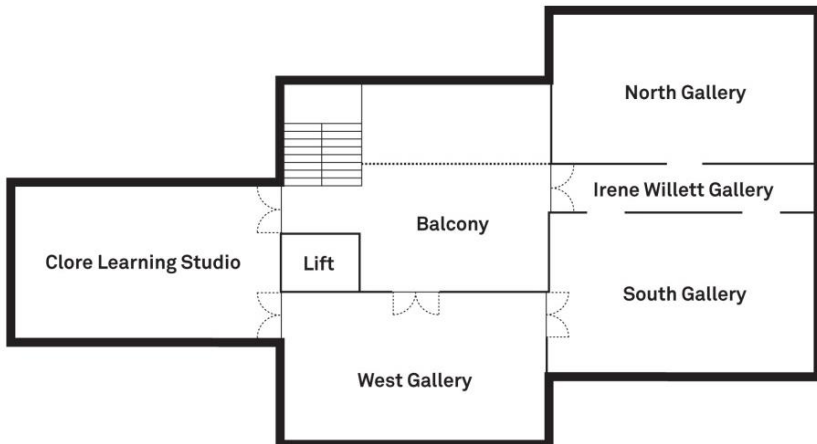


Here is a floor plan of the building.

The Sunley Gallery, shop, café, Foyle Rooms and toilets can be found on the ground floor.

The galleries, Balcony, and the Clore Learning Studio are on the first floor.

First floor



Our opening times are
Wednesday – Sunday, 10am – 5pm

We are free to visit.



This is the Wind Lobby. It is the first room you enter when arriving at the gallery.



Our gallery team is here to help. They wear black clothes and a red/orange lanyard.

Speak to them if you have any questions or would like to know more about the exhibitions or activities happening.

They can assist you with borrowing a wheelchair, portable stool or ear defenders.



This is our shop. If you would like to buy something, you can take it to the shop desk on the right. There is a hearing induction loop at the shop desk.



This is the café. If you would like something to eat or drink, speak to a member of staff at the desk. There is a hearing induction loop at the desk. There are two toilets in the café.



This is the Sunley Gallery which is the main entrance hall.
Sometimes there are performances, workshops or artworks in this area.
It can be bright and busy.



This is the Foyle Gallery. Sometimes artwork is shown here.
The Foyle Rooms are to the left. Toilets and lockers are to the right.
The hand dryers can be noisy.



We have single and multiple cubical toilets for all genders.
There are accessible toilets and a baby change area.
Lockers are available to use.



These are the Foyle Rooms. We use them for events and meetings. If you need a quiet space, you can ask to use one of these rooms, if they are available.



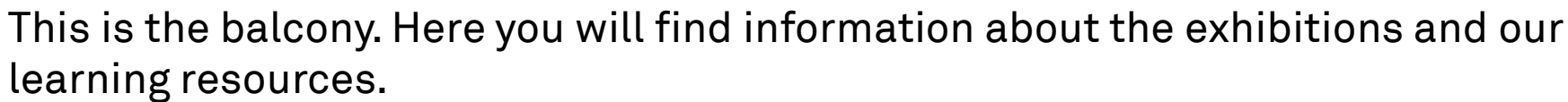
The galleries are on the first floor.
You can get there by walking up the stairs or taking the lift.
There are 28 steps and handrails on both sides.



The lift is opposite the stairs.



The lift is very big with handrails and controls on each side.
You enter and exit the lift through the same door.



This is the balcony. Here you will find information about the exhibitions and our learning resources.



The main galleries are upstairs. The look, sound, and feel of these spaces change often. Members of the gallery team will be in each space if you have a question.

To find out what exhibitions are showing, speak to a member of staff or visit turnercontemporary.org



This is our Clore Learning Studio. You can chill out, take part in workshops or self-led activities, and explore the art library.



To access our interactive guide, download the Bloomberg Connects app via the QR code or by clicking [here](#)

Here you'll find more information about the gallery and exclusive stories and videos about our exhibitions and programme.

Audio versions of the text are available via the app.

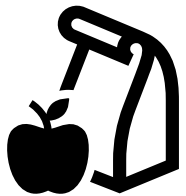
There are rules in the gallery



You cannot touch the artworks



You can take photos without flash



You cannot eat or drink in the gallery

Contact information

Turner Contemporary
Rendezvous
Margate
Kent
CT9 1HG

01843 233000

access@turnercontemporary.org

Phone and email operated daily - 10am – 5pm

More accessibility information:

<http://turnercontemporary.org/accessibility/>