



Turner  
Contemporary

# Turner Contemporary Venue Hire

[hire@turnercontemporary.org](mailto:hire@turnercontemporary.org)

A landmark venue on the Kent coastline, Turner Contemporary is a truly inspirational and unique choice for a fashionable and elegant wedding.



The Clore Learning Studio on the 1st floor can be hired for your wedding and civil ceremony.

With a spectacular view over the Harbour and the sea you will enter the space and walk down an aisle towards the windows surrounded by your family and friends. A changing exhibition offers an immersive experience in the contemporary art world.

Capacity: 120 seated theatre style

## The ceremony





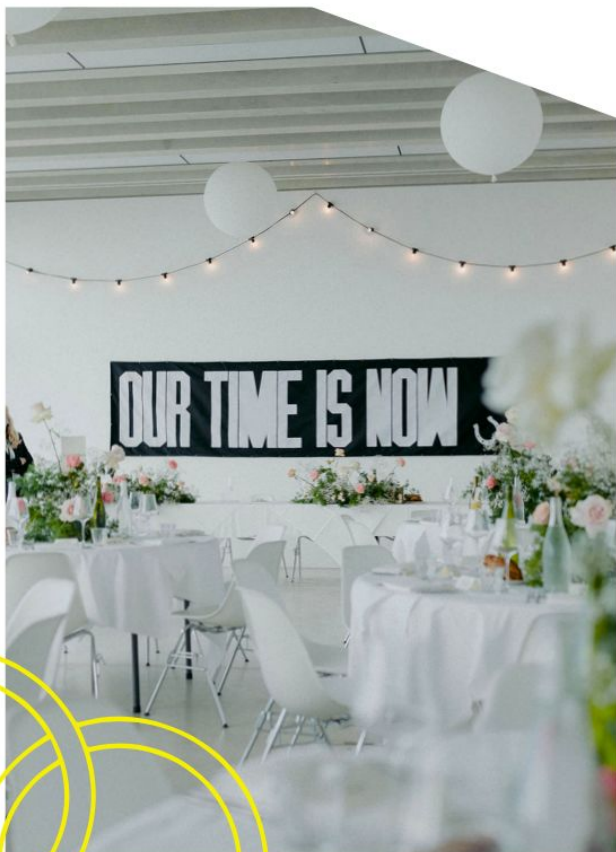
## The reception

Coming downstairs to the outdoor terrace you will greet your guests and start the celebrations with a glass of fizz and some tasty canapes, while your photographer finds the most amazing backdrops to create your memories.

The Foyle Rooms on the ground floor of the gallery are the perfect blank canvas on which to unleash your creative flair against an ever-changing seascape that dominates the view with floor to ceiling windows. We furnish the space with round or long tables to suit your ideas and there is a wide outdoor balcony for your guests to enjoy the fresh air and admire the famous Margate sunset.

## The wedding breakfast





## The evening

After the meal and speeches, once the gallery has closed, you have exclusive access to The Sunley Gallery on the ground floor for drinks and cake cutting while the Foyle Rooms are re-set for the evening. Dancing continues up to midnight as your perfect day comes to a close.

Capacity: 120 for seated meal and 150 for evening

---

Hire fees include a day before the wedding to decorate the room and the morning of the day after to clear everything.

From £4,000 + VAT – reception only. £4,300 + VAT for ceremony and reception

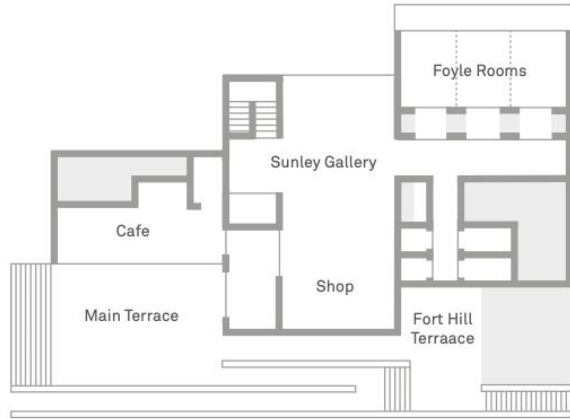
	Size	Capacity*	Suitable for...
The Foyle Rooms – a large multi-purpose space with private balcony offering panoramic sea views. This space also subdivides into three equal sized rooms perfect for smaller meetings.	1 room – 5.8 x 8.4m	60 standing, 40 theatre, 40 cabaret	<ul style="list-style-type: none"> <li>✓ conferences and meetings</li> <li>✓ lunches and dinners</li> <li>✓ weddings and celebrations</li> <li>✓ workshops and training</li> <li>✓ filming and photography</li> </ul>
	2 rooms – 11.5 x 8.4m	120 standing, 80 theatre, 80 cabaret	
	3 rooms – 17.5 x 8.4m	180 standing, 120 theatre, 120 cabaret	
Sunley Gallery – a double-height space available to hire outside of public opening hours. Tall windows frame the skyscape as the sun sets, providing a stunning backdrop for evening drinks receptions.	17.5m x 8.4m	220 standing, 60 theatre, 56 cabaret	<ul style="list-style-type: none"> <li>✓ drinks receptions</li> <li>✓ weddings and celebrations</li> <li>✓ filming and photography</li> </ul>
Clore Learning Studio – a light-filled exhibition gallery overlooking the historic Harbour Arm. Dedicated to showing artwork by young people and community groups, this is an inspirational space for creative workshops and away days.	17.5m x 8.4m	60-120 standing (subject to current exhibition), 60 theatre	<ul style="list-style-type: none"> <li>✓ creative away days</li> <li>✓ workshops and training</li> <li>✓ filming and photography</li> <li>✓ wedding ceremonies</li> </ul>
Restaurants and terraces – available for private hire outside gallery opening times with unequalled sunset views over the Harbour and Margate's 'golden mile'.	The Restaurant	40-50 seated, 80 standing	<ul style="list-style-type: none"> <li>✓ evening receptions</li> <li>✓ evening dinners</li> <li>✓ private parties</li> <li>✓ BBQs and outdoor dining</li> </ul>
	Main Terrace – 13.8 x 19.3m	250 standing	
	Fort Hill Terrace – 13.8 x 5.1m	120 standing	
Exterior – designed by David Chipperfield, the concrete, steel and white glass of our iconic building adds a contemporary feel to events and photoshoots.	Main Terrace – 13.8 x 19.3m	250 standing	<ul style="list-style-type: none"> <li>✓ drinks receptions</li> <li>✓ weddings and celebrations</li> <li>✓ filming and photography</li> </ul>
	Fort Hill Terrace – 13.8 x 5.1m	120 standing	

\* Capacities are approximate and will be confirmed in advance of your event by the Venue Hire and Events Manager

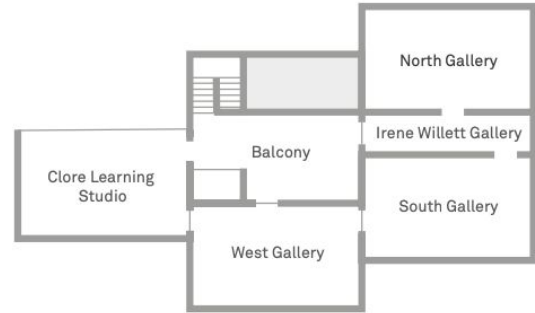
## Our Spaces



Beach



Ground Floor



First Floor

# Floorplan