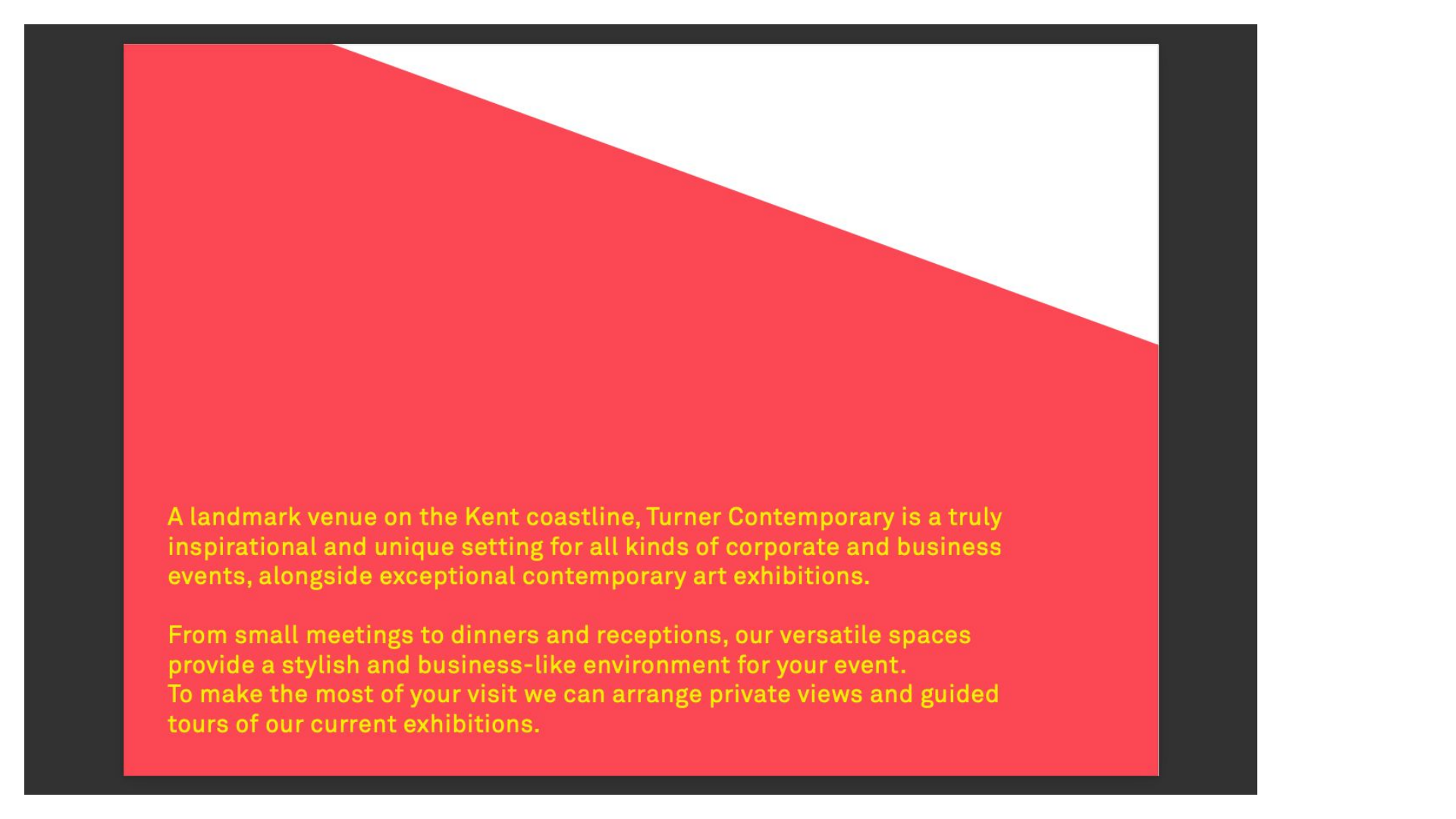


Turner
Contemporary

Turner Contemporary Venue Hire

hire@turnercontemporary.org



A landmark venue on the Kent coastline, Turner Contemporary is a truly inspirational and unique setting for all kinds of corporate and business events, alongside exceptional contemporary art exhibitions.

From small meetings to dinners and receptions, our versatile spaces provide a stylish and business-like environment for your event. To make the most of your visit we can arrange private views and guided tours of our current exhibitions.



Offering bright and flexible space with white painted walls and high ceilings, our dedicated event spaces communicate a professional and welcoming environment for meetings, conferences, training, breakfasts, lunches and dinners. There is a spacious outdoor terrace for breaks and fresh air overlooking the sea.

Fully equipped with projector, screen, modern furniture, blackout blinds and sound proofed room dividers to create flexible smaller spaces.

We offer tailored packages for conferences, meetings and away days. Creative workshops delivered by our talented in-house team can make your visit to Margate a really memorable experience.

Capacity: from 40 -120 seated or 60 -180 standing

The Foyle Rooms





Clore Learning Studio

This 1st floor gallery space is the place where we show work by young artists and community groups. The changing exhibition offers a backdrop of art to your event and a spectacular view over The Harbour Arm and out to sea. It can be made available for events and would be suitable for after-hours drinks receptions and private views.

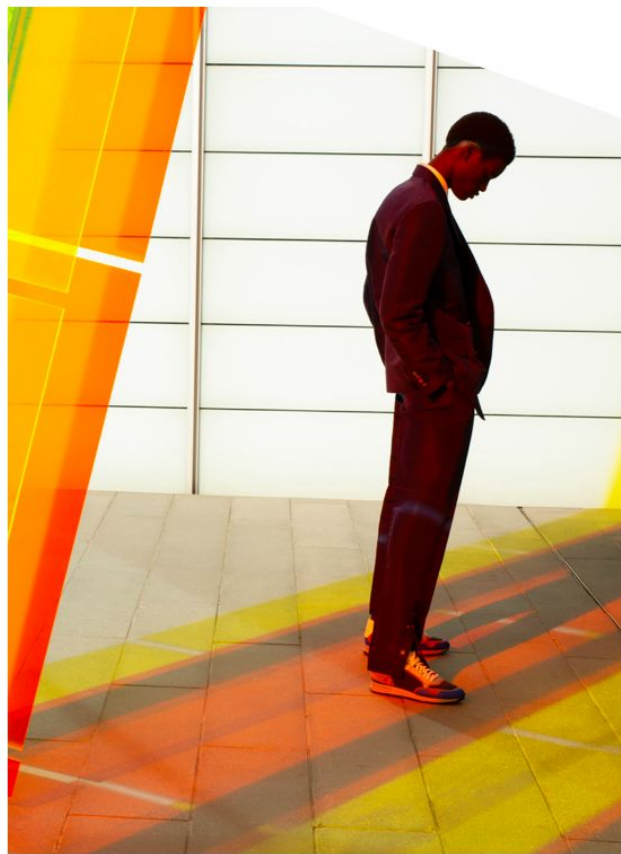
Capacity: up to 120 people standing

A bright and airy space on the ground floor, Sunley gallery can be hired for exclusive evening events once the Gallery has closed to the public. Combine it with a late private view of the exhibition and you have a unique opportunity to entertain your guests and network in an exceptional location.

Capacity: up to 350 people standing

Sunley Gallery





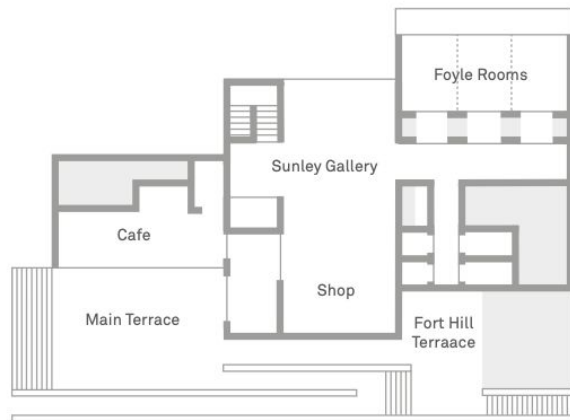
	Size	Capacity*	Suitable for...
The Foyle Rooms – a large multi-purpose space with private balcony offering panoramic sea views. This space also subdivides into three equal sized rooms perfect for smaller meetings.	1 room – 5.8 x 8.4m	60 standing, 40 theatre, 40 cabaret	<ul style="list-style-type: none"> ✓ conferences and meetings ✓ lunches and dinners ✓ weddings and celebrations ✓ workshops and training ✓ filming and photography
	2 rooms – 11.5 x 8.4m	120 standing, 80 theatre, 80 cabaret	
	3 rooms – 17.5 x 8.4m	180 standing, 120 theatre, 120 cabaret	
Sunley Gallery – a double-height space available to hire outside of public opening hours. Tall windows frame the skyline as the sun sets, providing a stunning backdrop for evening drinks receptions.	17.5m x 8.4m	220 standing, 60 theatre, 56 cabaret	<ul style="list-style-type: none"> ✓ drinks receptions ✓ weddings and celebrations ✓ filming and photography
Clore Learning Studio – a light-filled exhibition gallery overlooking the historic Harbour Arm. Dedicated to showing artwork by young people and community groups, this is an inspirational space for creative workshops and away days.	17.5m x 8.4m	60-120 standing (subject to current exhibition), 60 theatre	<ul style="list-style-type: none"> ✓ creative away days ✓ workshops and training ✓ filming and photography ✓ wedding ceremonies
Restaurants and terraces – available for private hire outside gallery opening times with unequalled sunset views over the Harbour and Margate's 'golden mile'.	The Restaurant	40-50 seated, 80 standing	<ul style="list-style-type: none"> ✓ evening receptions ✓ evening dinners ✓ private parties ✓ BBQs and outdoor dining
	Main Terrace – 13.8 x 19.3m	250 standing	
	Fort Hill Terrace – 13.8 x 5.1m	120 standing	
Exterior – designed by David Chipperfield, the concrete, steel and white glass of our iconic building adds a contemporary feel to events and photoshoots.	Main Terrace – 13.8 x 19.3m	250 standing	<ul style="list-style-type: none"> ✓ drinks receptions ✓ weddings and celebrations ✓ filming and photography
	Fort Hill Terrace – 13.8 x 5.1m	120 standing	

* Capacities are approximate and will be confirmed in advance of your event by the Venue Hire and Events Manager

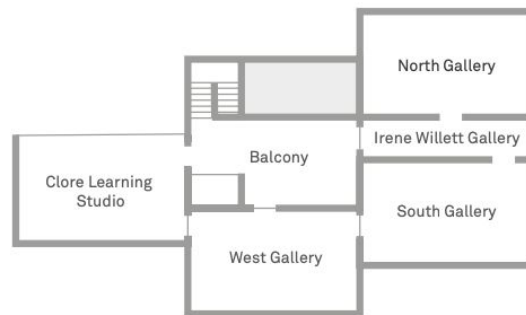
Our Spaces



Beach



Ground Floor



First Floor

Floorplan

