

Welcome to Turner Contemporary.

We are a contemporary art gallery in Margate inspired by JMW Turner's experimental and radical approach to making art.

We believe everyone is creative and has a right to engage with art.

A visual journey

# Turner Contemporary



The gallery is on the Harbour Arm. You will see lots of boats in the water opposite.

# Turner Contemporary



There are seven accessible parking bays available for visitors with a Blue Badge. Pay and Display parking can be found just opposite the gallery on the Harbour Arm and just beyond the RNLI on the Rendezvous next to the gallery.



# Turner Contemporary

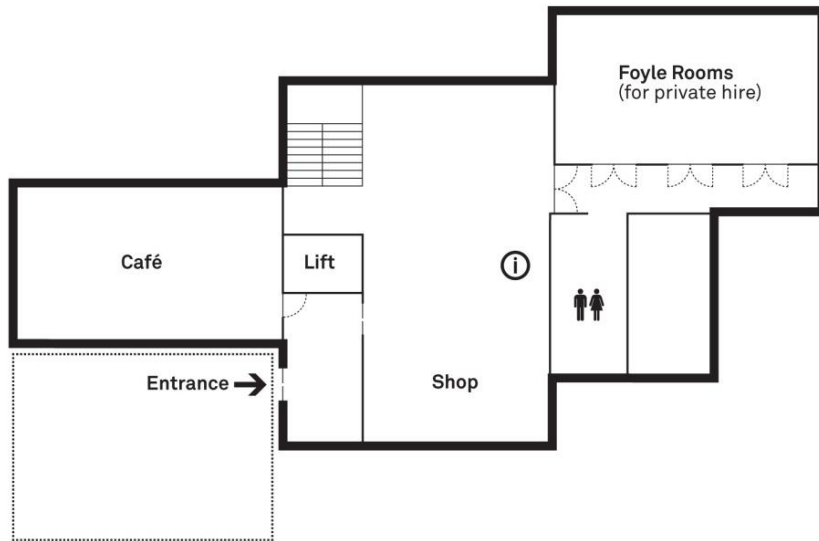


You can use the steps or accessible ramp to enter the gallery.



# Turner Contemporary

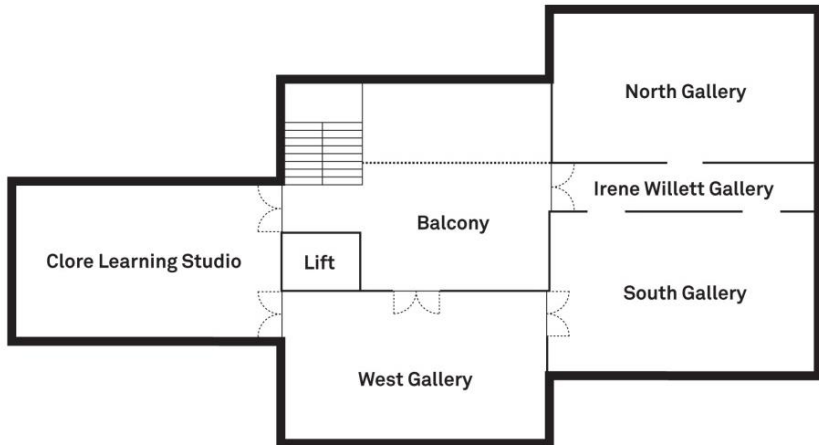
## Ground floor



Here is a floor plan of the building.

The Sunley Gallery, shop, café, Foyle Rooms and toilets can be found on the ground floor.

## First floor



The galleries, Balcony and the Clore Learning Studio are on the first floor.

The gallery is open Tuesday – Sunday 10:00 – 17:00 and is free to enter.

# Turner Contemporary



When you arrive in the gallery, you will find the welcome desk.

You can speak to a member of staff if you need help or want to know more about the exhibitions and activities happening.

We have wheelchairs, portable stools, large print text and magnifying sheets available for you to borrow.





# Turner Contemporary



This is our shop. If you would like to buy something, you can take it to the shop desk on the right. There is a hearing induction loop at the shop desk.





## Turner Contemporary

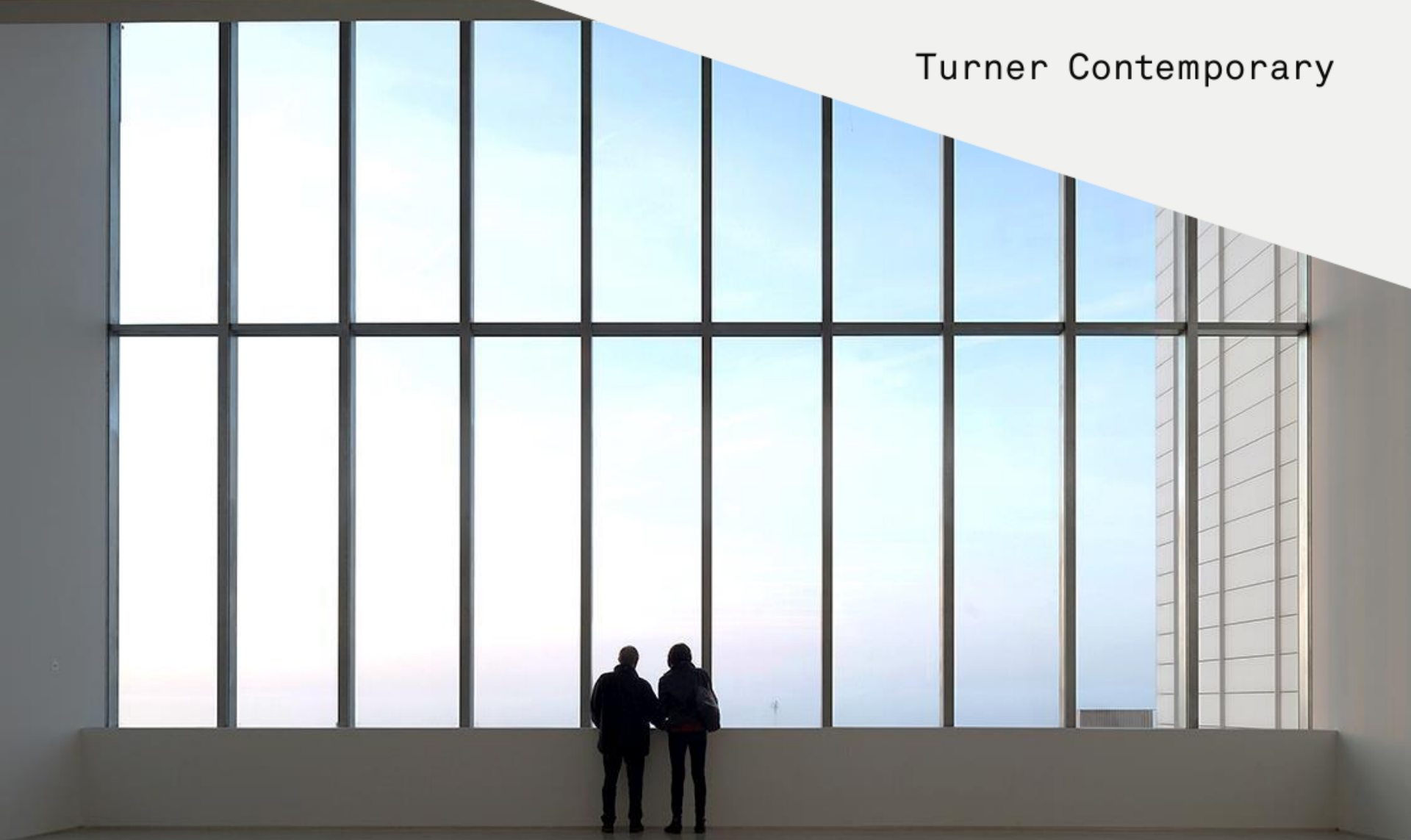


Barletta Restaurant and Café is on the ground floor next to the entrance. If you would like something to eat or drink, find a seat and someone will take your order. You can get a takeaway at the counter by speaking to a member of staff. The café counter has a hearing induction loop and an accessible toilet. Sometimes it can be crowded and noisy.





# Turner Contemporary



This is the Sunley Gallery which is the main entrance hall. Sometimes there are performances, workshops or artworks in this area.  
It can be bright and busy.



## Turner Contemporary



Here is an example of an exhibition in the Sunley Gallery.  
This installation is called Sirens by Sophie Von Hellermann and Ann Ryan.



# Turner Contemporary



This is the Foyle Corridor. Sometimes artwork is shown here.  
The Foyle Rooms are to the left and the toilets and lockers are to the right.  
The hand dryers can be noisy.





## Turner Contemporary



These are the Foyle rooms. We use them for events and meetings. If you need a quiet space, you can ask to use one of these rooms if they are available.

## Turner Contemporary



We have single and multiple cubical toilets for all genders.  
There are accessible toilets and a baby change area.  
Lockers are available to use.



# Turner Contemporary



Turner Contemporary is committed to providing a safe, welcoming and respectful environment for everyone. We will not tolerate abusive behaviour or any form of harassment or discrimination on the grounds of age, disability, sex, sexual orientation, gender identity, ethnicity, race, religion or otherwise towards our staff and visitors. Anyone exhibiting such behaviour may be asked to leave.

↗ Exhibition galleries

↗ Clore Learning Studio

£5

Suggested donation  
Thank you

£5

Suggested donation  
Thank you

Ingrid Pollard  
Carson  
Slowly  
Turner

giftaid it

The galleries are on the first floor. You can get there by walking up the stairs or taking the lift. There are 28 steps and handrails on both sides.



# Turner Contemporary



The lift is opposite the stairs.



## Turner Contemporary



The lift is very big with handrails and controls on each side.  
You enter and exit the lift through the same door.





# Wayfinder

Larry Achiampong  
12 March – 19 June 2022

Turner Contemporary presents the first major gallery by Larry Achiampong. In 1988, Achiampong has also curated a display of J.M.W. Turner (1775–1851) and collaborated with the artist to create a new film, *Wayfinder*. The distinctive voice over narratives in his films draw on real testimonies, his own autobiography and oral histories.

The voice, listening and oral storytelling are central to Achiampong's practice as a tool to recover erased histories and experiences. Stories and symbolism from his Akan heritage, told to him by his mother, inform his artistic language. The distinctive voice over narratives in his films draw on real testimonies, his own autobiography and oral histories.

Powerful work in film and other media explores issues of class, post-colonialism, the deeply entrenched inequalities of our society. Drawing on popular culture, collective and personal histories, incorporates moving image, sound, stage, music and performance.

Popular culture is a major source of inspiration for Achiampong – film, music, comic books and video games. For the artist, 'sound makes up at least 70% of your experience of film' and he compares his own electro-synth and orchestral scores. Video games are an important influence on his approach to sound, character and landscape, as well as in his sculptural installations. In the gaming room, you can play video games that have inspired him, many of which will also take you on a journey.

At the heart of this exhibition is a space and time, journeys with arrays of self-discovery. In the artist's inspired film *Wayfinder*, a young girl's epic journey across England. In the project, a Pan-African Alliance of young people journey back in time to retrieve the testimonies of those who have been oppressed.

Wayfinder by Larry Achiampong is supported by Turner Contemporary and B&C Centre for Contemporary Art and Film Gallery.

This is the balcony on the first floor. Here you'll find information about the current exhibition and a place to sit. There are three main galleries and the Clore Learning Studio.

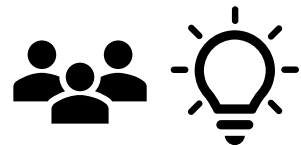




# Turner Contemporary



This is the Clore Learning Studio. We use this space for exhibitions, workshops and events. You can find out what's on by visiting the website, calling the gallery or by asking a member of staff.



# Turner Contemporary

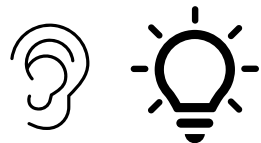


This is West Gallery. The exhibitions change regularly so can look quite different. There is a member of staff in each gallery if you have any questions.

# Turner Contemporary



This is North Gallery. Sometimes the galleries can be very bright and noisy.  
Ask a member of staff if you would like to borrow ear defenders.





# Turner Contemporary



This is the Irene Willet Gallery. Sometimes the exhibitions can be dark.  
Our staff are more than happy to help if you have questions or need support.

## Turner Contemporary



This is South Gallery. Most of the time, the artwork cannot be touched.  
If you're unsure, please ask a member of staff.



You might see members of our  
Facilities team in the gallery.

They work hard to keep the gallery  
clean and safe.





To access our interactive guide, download the Bloomberg Connects app via the QR code or by clicking [here](#)

Here you'll find more information about the gallery and exclusive stories and videos about our exhibitions and programme.

Audio versions of the text are available via the app.

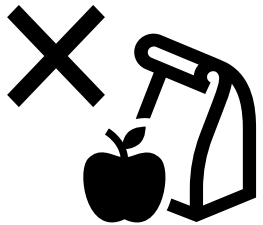
## These are the rules in the gallery



You cannot touch the artworks



You can take photos without flash



You cannot eat or drink in the gallery

**Contact information**

Turner Contemporary  
Rendezvous  
Margate  
Kent CT9 1HG

01843 233000

[access@turnercontemporary.org](mailto:access@turnercontemporary.org)

Phone and email operated daily 10:00 – 17:00

More accessibility information:

<http://turnercontemporary.org/accessibility/>